

GSS-313 Dowel

Material

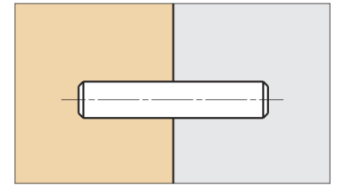
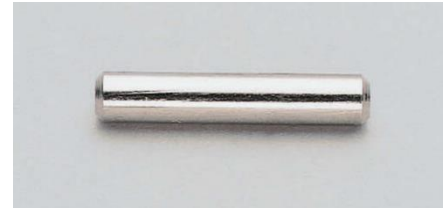
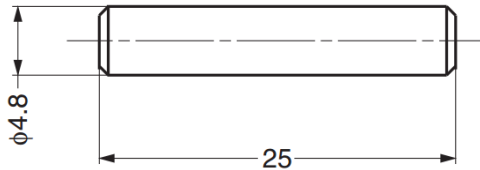
- Steel, nickel finish

Recommended Mounting Hole

- $\phi 5$

Notes

- Value of load capacity is based on 12.5 mm depth mounting hole



Part No.	Load Capacity (per 4 pieces)	
GSS-313	196 N	20 kg

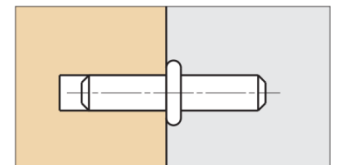
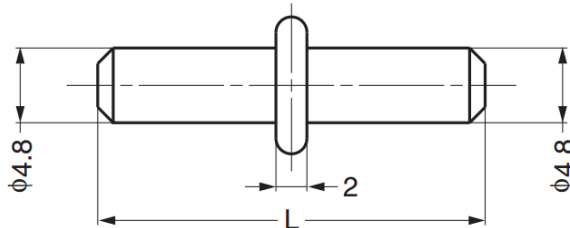
GSS-312 Dowel

Material

- Steel, nickel finish

Recommended Mounting Hole

- $\phi 5$



Part No.	L	Load Capacity (per 4 pieces)	
GSS-312-18	18	196 N	20 kg
GSS-312-25	25	245 N	25 kg

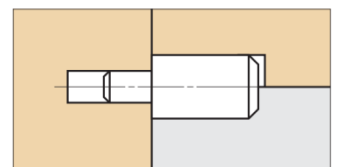
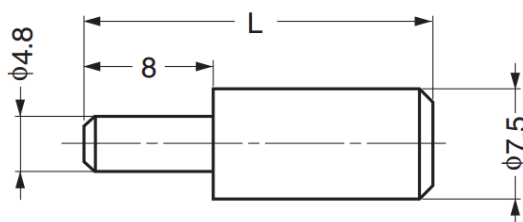
GSS-310 Dowel

Material

- Steel, nickel finish

Recommended Mounting Hole

- $\phi 5$



Part No.	L	Load Capacity (per 4 pieces)	
GSS-310-18	18	147 N	15 kg
GSS-310-23	25		